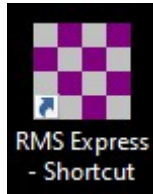
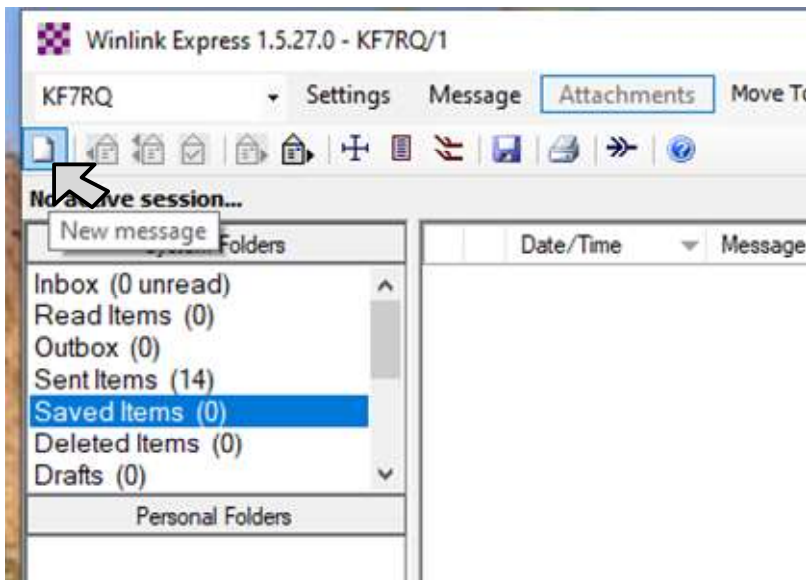


This is a cheat sheet on how to send a packet Winlink form from One station directly to another station without going through a gateway. This is not a radio setup guide.



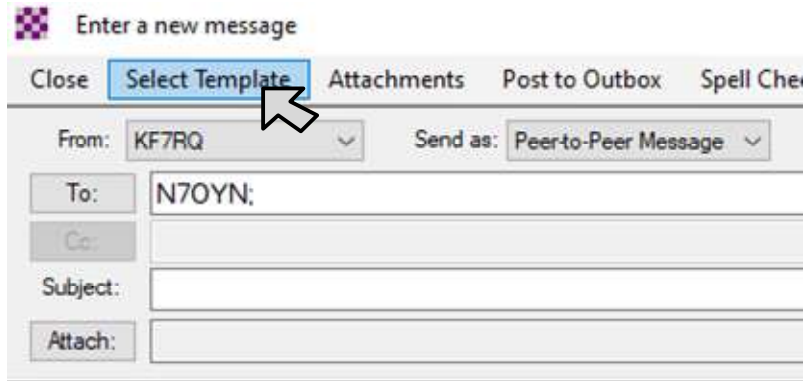
1. Open up RMS Express
2. Open a new message by clicking on the page in the upper left corner of the WinLink express screen.



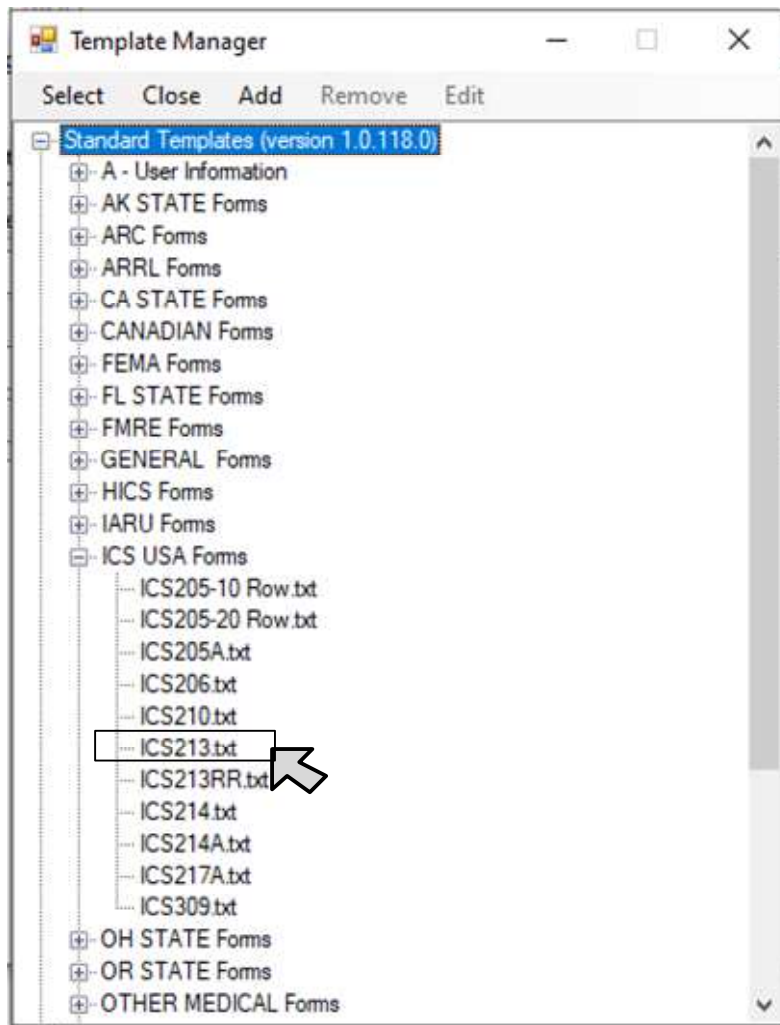
3. Fill in the **To:** Field and Set the Send as: drop down box to proper method of transmission (Peer-toPeer Message).



4. Select Templates



5. Select Standard Templates (version xxxxx) > ICS USA Forms > ICS213.txt



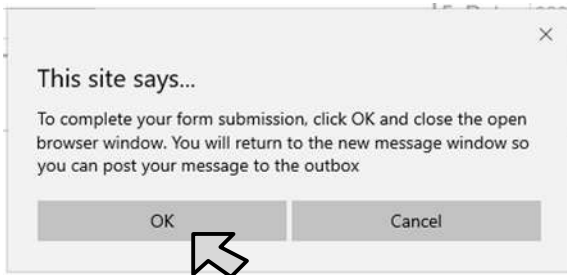
This will open with your web browser. OK. If it asks about active elements, Say OK.

6. For this exercise, fill in anything on the form.

General Message (ICS 213)			
Load ICS213 INITIAL Data		Form Instructions	
1. Incident Name: NEMCo Exercize			
2. To (Name/Position): Randy			
3. From (Name/Position): Doug			
4. Subject: Need a list	5. Date: 2020-04-21	6. Time: 21:40	
7. Message: Would you send the list of people.			
8. Approved by: Doug		Position / Title: Radio operator	
Save ICS213 INITIAL Data		Submit	Reset Form
			Ver 41.3

Push **[submit]**. It may come back and ask you to fill in required fields. Fill in the fields and then press **[submit]** again.

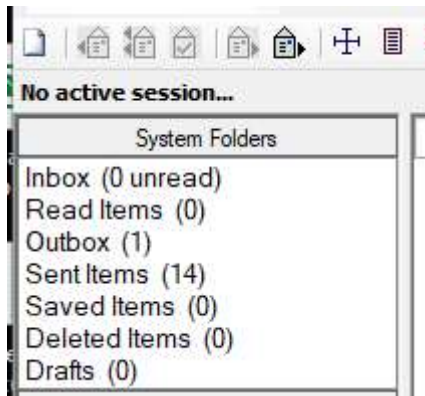
7. Then OK.



This will fill in the WinLink message and add an attachment.

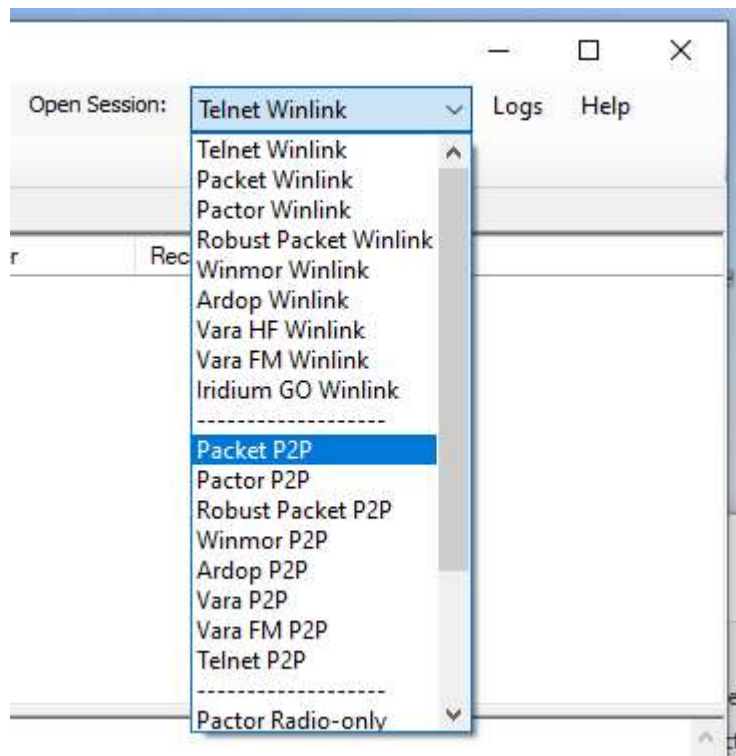
8. Make sure the drop down **Send as:** menu is **Peer-to-Peer Message** (unless you want to do differently).

Enter a new message			
Close	Select Template	Attachments	Post to Outbox
		Spell Check	Save in Drafts
From: KF7RQ	Send as: Peer-to-Peer Message	<input type="checkbox"/> Request read receipt	Set Defaults
To: N7OYN;			
Cc:			
Subject: 213-NEMCo Exercize-Need a list - 2020-04-21 21:40			
Attach: RMS_Express_Form_IC213_Initial_Viewer.xml;			
GENERAL MESSAGE (ICS 213)			
1. Incident Name: NEMCo Exercize			
2. To (Name and Position): Randy			
3. From (Name and Position): Doug			
4. Subject: Need a list			
5. Date: 2020-04-21			
6. Time: 21:40			
7. Message:			
Would you send the list of people.			

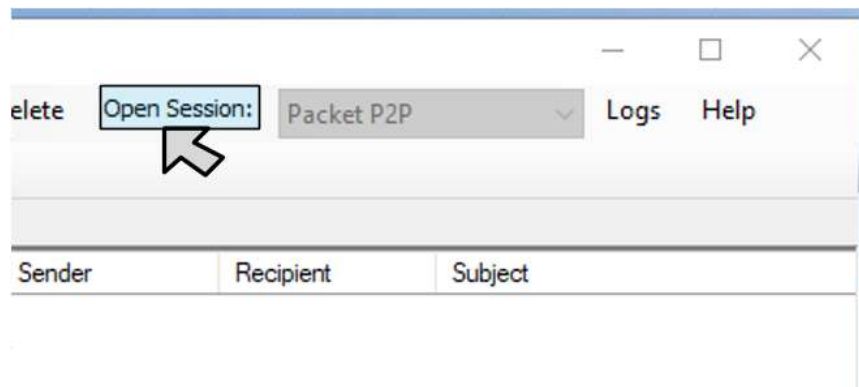


Your outbox will now have a message in it.

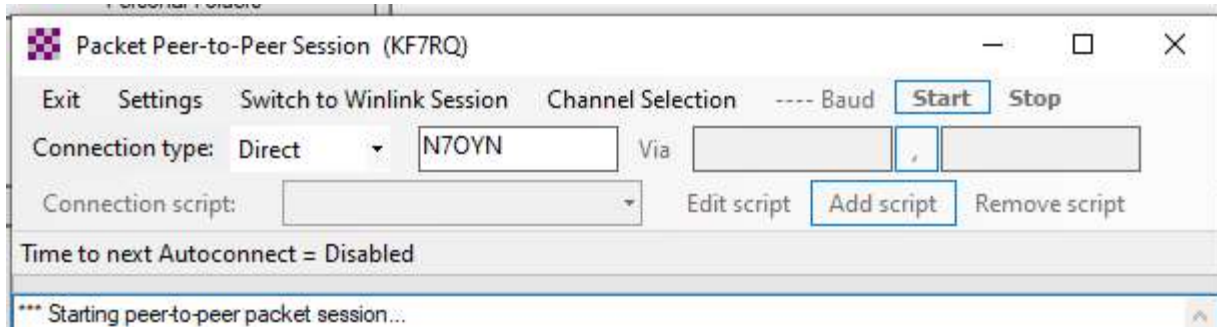
9. To send the message By Peer-to-Peer, Open the session as **Packet P2P**



10. Then press **[Open Session]**



11. Now fill in the **call sign** of the station you are sending this to. Then press **[start]**.



You will see the radio connect to the other station and the green progress bar will scroll across the screen as your message is transmitted to the other station. If there is a message waiting for you at the other station, it will also download at this time.

12. You do not have to close the Packet Peer-to-Peer Session window. **Leave it open** if you want other stations to contact you and leave a message with you.

You can also leave the Packet Peer-to-Peer Session window open and go back to the main Winlink Express window and start a new message. Post the new message in the outbox and go back to the Packet Peer-to-Peer Session window (still Open). Fill in the new station call sign and push the [start] button.

It does not matter what the call sign is that you filled in, your station will still receive messages from other stations.